

Tree ID#	Species	DBH (in)	Height (ft)	Avg. Canopy Radius (ft)	CRZ (ft)	Recommendation per development	Replacement Trees Required
8373	DOUGLAS FIR (PSEUDOTSUGA MENZIESII)	28	125	20	28	REMOVED	3
8374	JAPANESE MAPLE (ACER PALMATUM)	13	25	20	13	RETAINED	
8375	JAPANESE MAPLE (ACER PALMATUM)	14	25	5	14	REMOVED	2
8376	JAPANESE MAPLE (ACER PALMATUM)	13	25	15	13	RETAINED	
8377	BIGLEAF MAPLE (ACER MACROPHYLLUM)	29	80	20	29	RETAINED	
8378	BIGLEAF MAPLE (ACER MACROPHYLLUM)	37	80	15	37	RETAINED	
8379	BIGLEAF MAPLE (ACER MACROPHYLLUM)	37	80	25	37	RETAINED	
8380	BIGLEAF MAPLE (ACER MACROPHYLLUM)	16	70	15	16	RETAINED	
8381	WESTERN REDCEDAR (THUJA PLICATA)	17	70	15	17	RETAINED	
8382	BIGLEAF MAPLE (ACER MACROPHYLLUM)	29	80	20	29	RETAINED	
8383	WESTERN REDCEDAR (THUJA PLICATA)	36	100	15	36	RETAINED	
8384	PACIFIC YEW (TAXUS BREVIFOLIA)	7	20	10	7	REMOVED	1
8385	PACIFIC YEW (TAXUS BREVIFOLIA)	11	50	10	11	REMOVED	2
8386	PACIFIC YEW (TAXUS BREVIFOLIA)	9	50	10	9	REMOVED	1
8387	BLACK COTTONWOOD (POPULUS TRICHOCARPA)	6	35	15	6	REMOVED	1
8388	WESTERN HEMLOCK (TSUGA HETEROPHYLLA)	10	50	5	0	RETAINED	
8389	WESTERN REDCEDAR (THUJA PLICATA)	54	130	15	54	RETAINED	
8390	WESTERN REDCEDAR (THUJA PLICATA)	45	130	15	45	RETAINED	
8391	DOUGLAS FIR (PSEUDOTSUGA MENZIESII)	11	70	10	11	RETAINED	
8392	COASTAL REDWOOD (SEQUOIA SEMPERVIRENS)	28	100	20	28	RETAINED	
8393	BIGLEAF MAPLE (ACER MACROPHYLLUM)	16	60	20	16	RETAINED	
8394	WESTERN HEMLOCK (TSUGA HETEROPHYLLA)	32	90	20	32	RETAINED	
8395	WESTERN HEMLOCK (TSUGA HETEROPHYLLA)	38	120	20	38	RETAINED	
8396	BIGLEAF MAPLE (ACER MACROPHYLLUM)	9	45	15	9	RETAINED	
8397	WESTERN HEMLOCK (TSUGA HETEROPHYLLA)	20	30	5	0	RETAINED	
8398	WESTERN HEMLOCK (TSUGA HETEROPHYLLA)	25	75	20	25	RETAINED	
8399	PACIFIC YEW (TAXUS BREVIFOLIA)	10	35	15	10	REMOVED	2
8400	PACIFIC YEW (TAXUS BREVIFOLIA)	6	35	15	6	REMOVED	1
8401	PACIFIC YEW (TAXUS BREVIFOLIA)	11	35	15	11	REMOVED	2
8402	PACIFIC YEW (TAXUS BREVIFOLIA)	11	30	15	11	RETAINED	
8403	DOUGLAS FIR (PSEUDOTSUGA MENZIESII)	38	130	25	38	REMOVED	6
8404	DOUGLAS FIR (PSEUDOTSUGA MENZIESII)	50	130	30	50	REMOVED	6
8405	BIGLEAF MAPLE (ACER MACROPHYLLUM)	58	85	45	58	RETAINED	
8406	SCOTS PINE (PINUS SYLVESTRIS)	18	85	15	18	REMOVED	2
8407	STRAWBERRY TREE (ARBUTUS UNEDO)	12	85	15	12	REMOVED	2
8408	CHERRY LAUREL (PRUNUS AUROCARASUS)	10	20	10	10	REMOVED	2
1	DOUGLAS FIR (PSEUDOTSUGA MENZIESII)	43	125	25	43	REMOVED	6

- NOTE:
- REFER TO ARBORIST REPORT FOR FULL TREE ASSESSMENT AND TREE PROTECTION REQUIREMENTS.
 - MINIMUM TREE RETENTION RATE TO BE REQUIRED 30%.
 - TOTAL (36) TREES ON SITE, AND WILL REQUIRE (12) TREES TO BE RETAINED.
 - TOTAL (22) TREES TO BE RETAINED ON SITE.
 - TOTAL (39) REPLACEMENT TREES REQUIRED. PLEASE SEE BELOW REPLACEMENT RATIO AND ABOVE REPLACEMENT TABLE FOR EACH TREE REPLACEMENTS QUANTITY.
 - LESS THAN 10" REQUIRE (1) REPLACEMENT TREE
 - 10" UP TO 24" REQUIRE (2) REPLACEMENT TREES
 - 24" UP TO 36" REQUIRE (3) REPLACEMENT TREES
 - MORE THAN 36" AND ANY EXCEPTIONAL TREES REQUIRE (6) TREES.
 - ALL DECIDUOUS TREE WILL BE 1"-1.5" CALIPER ACQUIRED FROM NURSERY STOCK. ALL CONIFER TREE WILL BE AT LEAST 6' TALL.
 - REFER TO L-2 PLAN FOR TREE REPLANTING SCHEDULE.
 - TREE PLANTING ACTIVITY WILL CONFORM TO AMERICAN NATIONAL STANDARDS INSTITUTE STANDARD.

ZHANG RESIDENCE
 PARCEL: 1438700145
 MERCER ISLAND WA 98040

LOTUS LANDSCAPE DESIGN
 425 753 3424
 JOSEPHINE@LOTUSLANDSCAPEDESIGN.COM

STATE OF WASHINGTON
 REGISTERED
 LANDSCAPE ARCHITECT
 Josephine Chen-Lian
 CERTIFICATE NO. 905

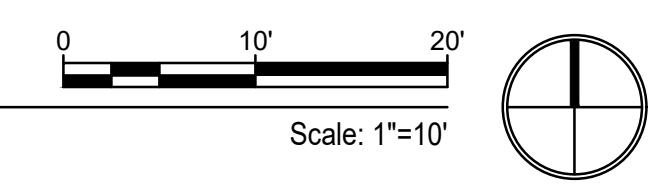
ISSUE DATE
 APRIL 28, 2025

NO. DATE DESCRIPTION OF REVISIONS

**TREE
 REMOVAL AND
 RETAINMENT
 PLAN**

SHEET NUMBER

L-1





PLANT SCHEDULE SITE

SYMBOL	CODE	BOTANICAL / COMMON NAME	SIZE	QTY	
TREES					
	AC	ACER CIRCINATUM / VINE MAPLE	1" CAL	8	
	AS	ACER PALMATUM 'SANGO-KAKU' / CORAL BARK JAPANESE MAPLE	1" CAL	2	
	PC	PINUS CONTORTA / SHORE PINE	6" HT	6	
	PA3	PRUNUS X YEDOENSIS 'AKEBONO' / AKEBONO YOSHINO CHERRY	2" CAL	1	
	PD	PSEUDOTSUGA MENZIESII / DOUGLAS FIR	6" HT	7	
	TP	THUJA PLICATA / WESTERN RED CEDAR	6" HT	8	
	TM	TSUGA MERTENSIANA / MOUNTAIN HEMLOCK	6" HT	7	
			TOTAL 39 TREES		
SHRUBS					
	AA3	AMELANCHIER ALNIFOLIA / SERVICEBERRY	1 GAL	15	
	AH2	AZALEA X 'HINO-CRIMSON' / HINO-CRIMSON KURUME AZALEA	1 GAL	15	
	GS	GAULTHERIA SHALLON / SALAL	1 GAL	19	
	LA	LAVANDULA ANGUSTIFOLIA 'HIDCOTE' / LAVENDER	1 GAL	39	
	MR	MAHONIA REPENS / CREEPING MAHONIA	1 GAL	15	
	PM	POLYSTICHUM MUNITUM / WESTERN SWORD FERN	1 GAL	12	
	RE	RHODODENDRON X 'P.J.M.' / PJM RHODODENDRON	3 GAL	7	
	RS	RIBES SANGUINEUM / RED FLOWERING CURRANT	1 GAL	14	
	VO	VACCINIUM OVATUM / EVERGREEN HUCKLEBERRY	1 GAL	15	
GROUND COVERS					
	CF2	CALLUNA VULGARIS 'FIREFLY' / FIREFLY HEATHER	1 GAL	24" o.c.	40

- NOTE:**
- REFER TO L-1 FOR TREE INVENTORY AND REPLACEMENT TREES REQUIREMENTS.
 - TOTAL (39) REPLACEMENT TREES ARE REQUIRED
 - TOTAL (39) PROPOSED TREES ON SITE, SEE SCHEDULE.
 - REMOVE ALL MAN MADE STRUCTURES AND DEBRIS PILES FROM THE STREAM BUFFER AREA. REMOVAL INCLUDES FOOTINGS AND OTHER BELOW GRADE ITEMS TO WHATEVER DEPTH ENCOUNTERED.
 - REMOVE ALL EXOTIC AND INVASIVE SPECIES, UNDESIRABLE VEGETATION.
 - LANDSCAPE CONTRACTOR IS RESPONSIBLE TO LOCATE ALL UNDERGROUND UTILITIES PRIOR TO STARTING WORK.
 - TREE PLANTING ACTIVITY WILL CONFORM TO AMERICAN NATIONAL STANDARDS INSTITUTE STANDARD.
 - ALL PLANTING AREAS SHALL BE CAPPED WITH 2" DEPTH OF MULCH AFTER PLANTING IS COMPLETED.

ZHANG RESIDENCE
 PARCEL: 1438700145
 MERCER ISLAND WA 98040



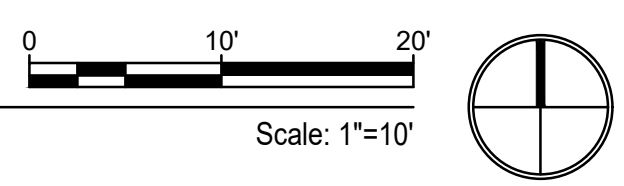
ISSUE DATE
 APRIL 28, 2025

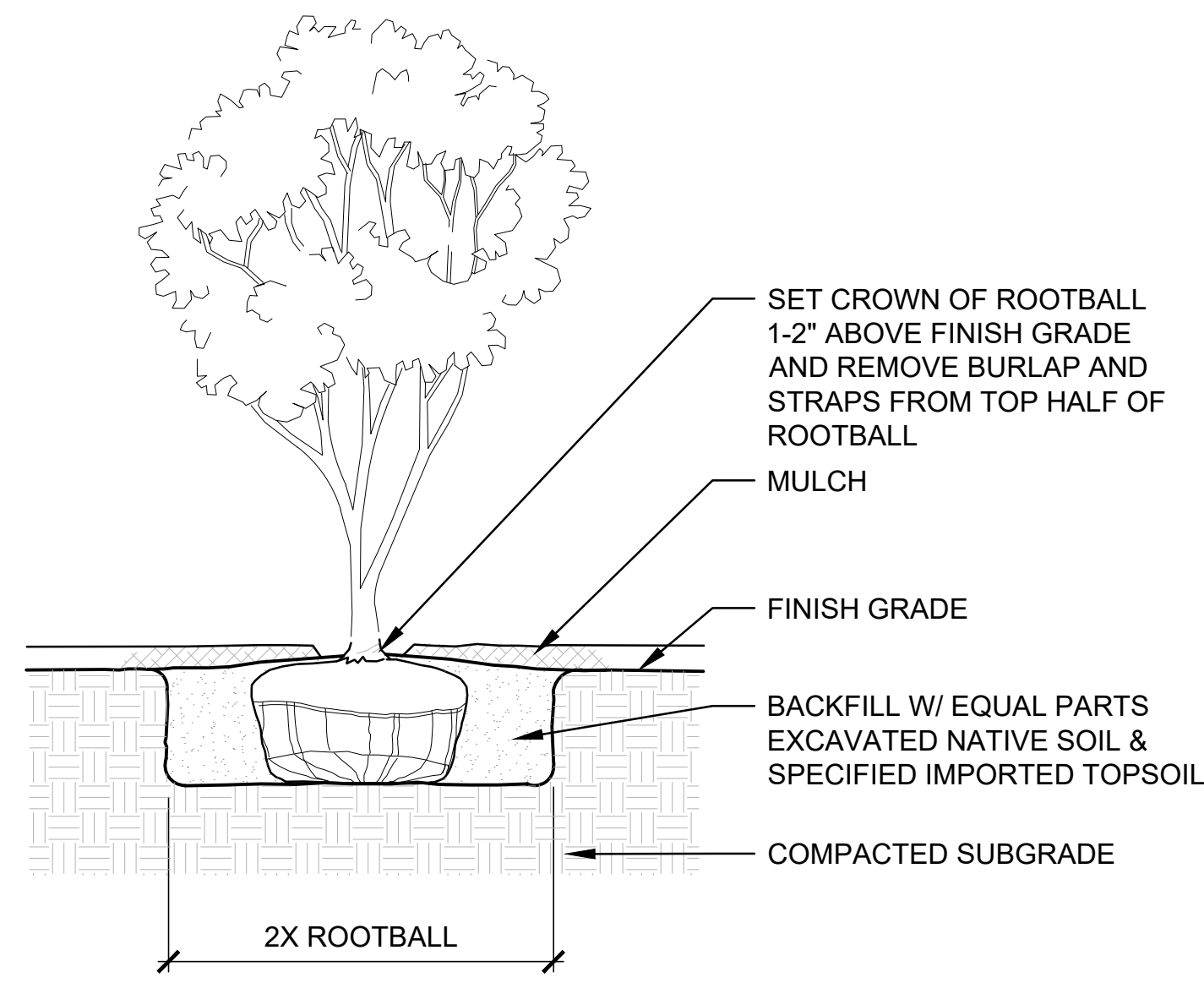
NO. DATE DESCRIPTION OF REVISIONS

LANDSCAPE PLAN

SHEET NUMBER

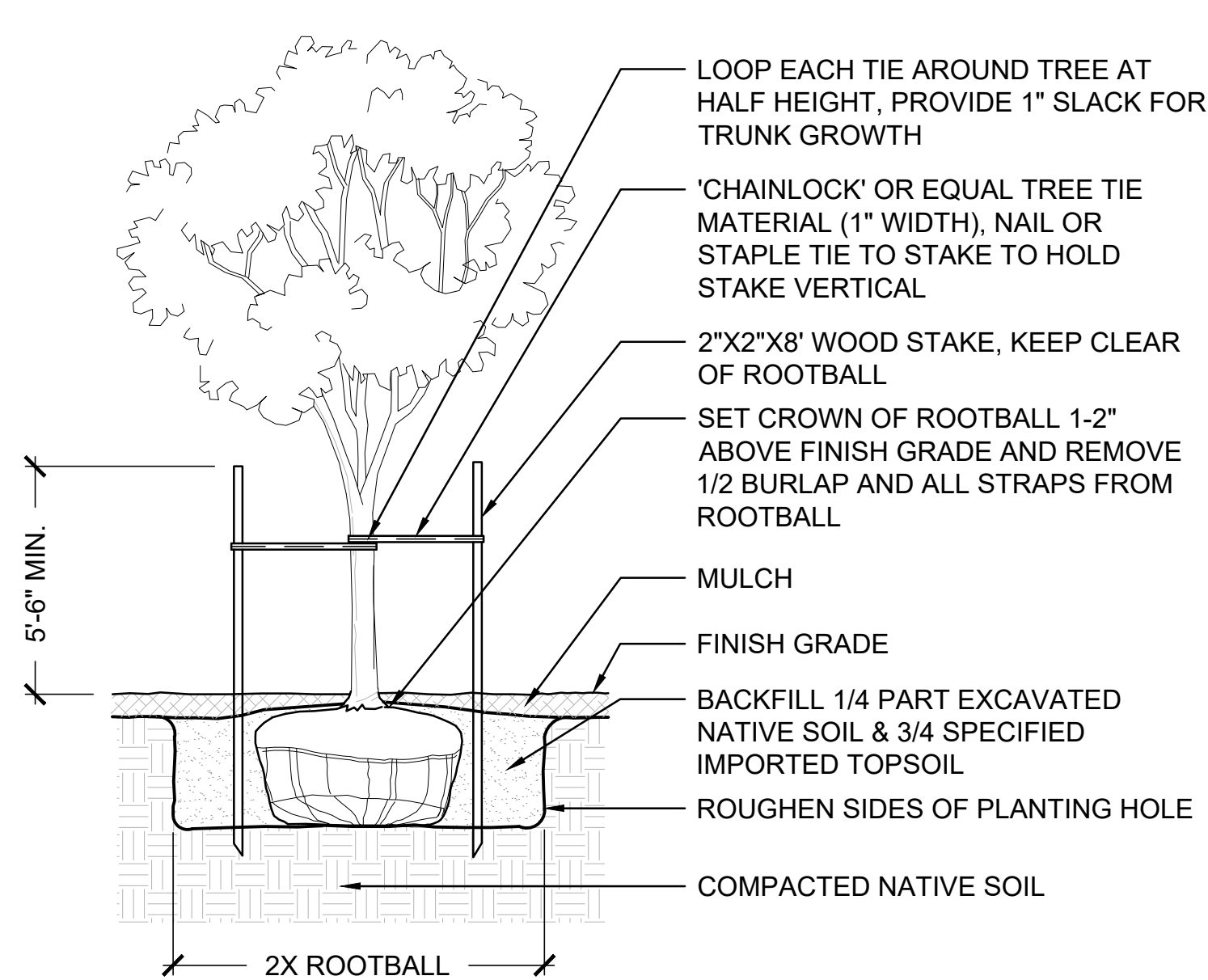
L-2





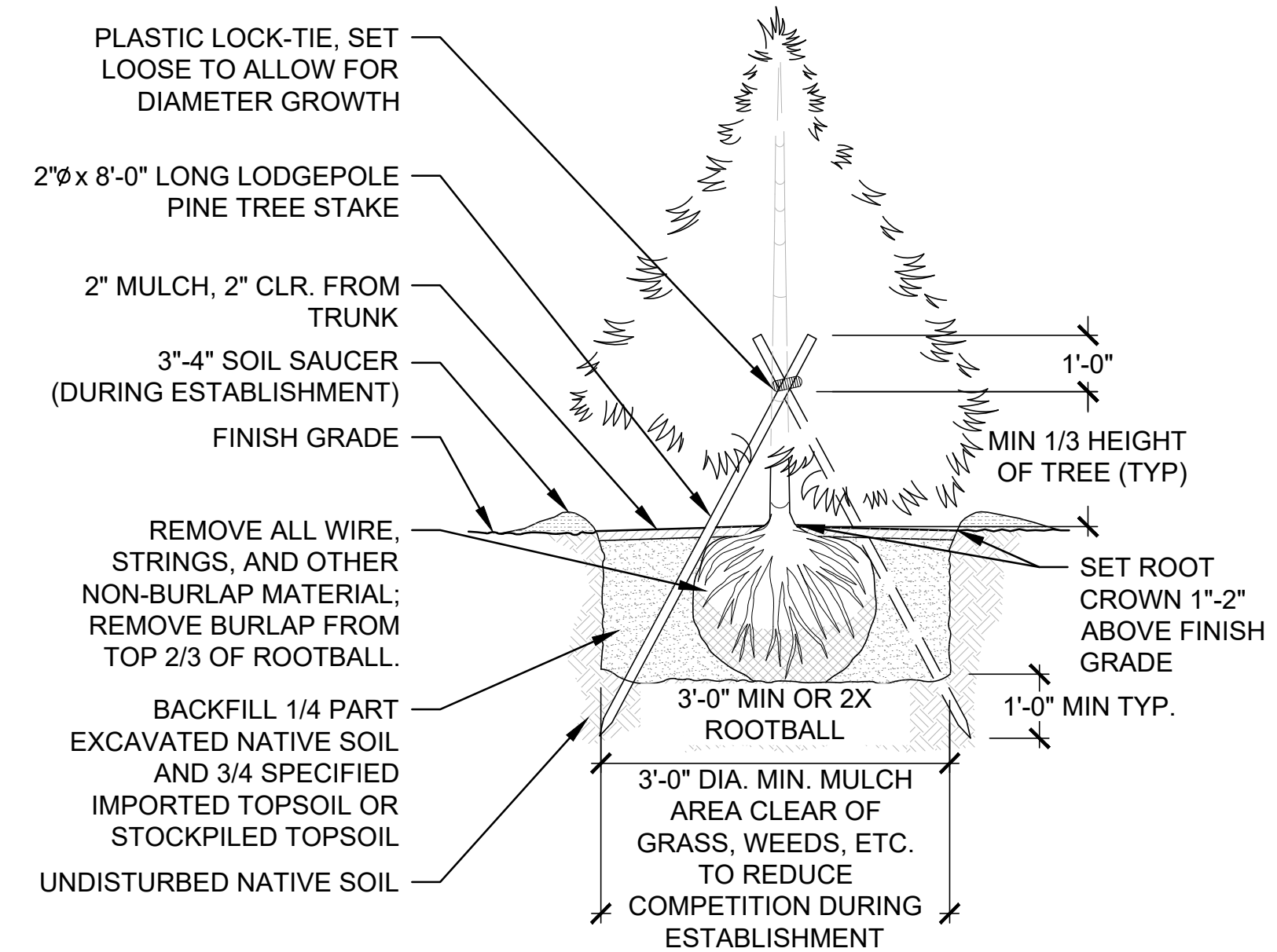
1 MULTI-STEM TREE PLANTING

N.T.S.



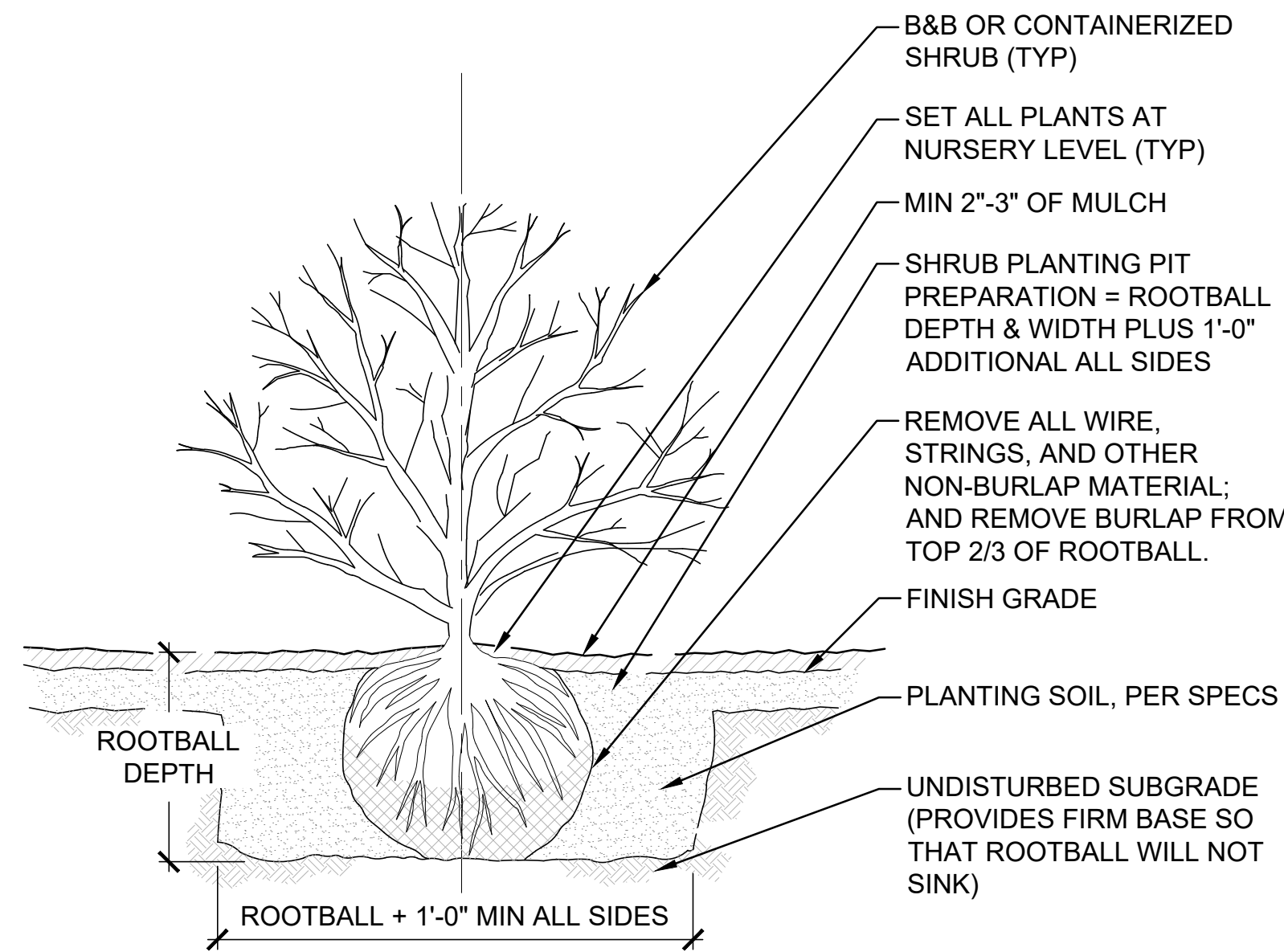
2 DECIDUOUS TREE PLANTING

N.T.S.



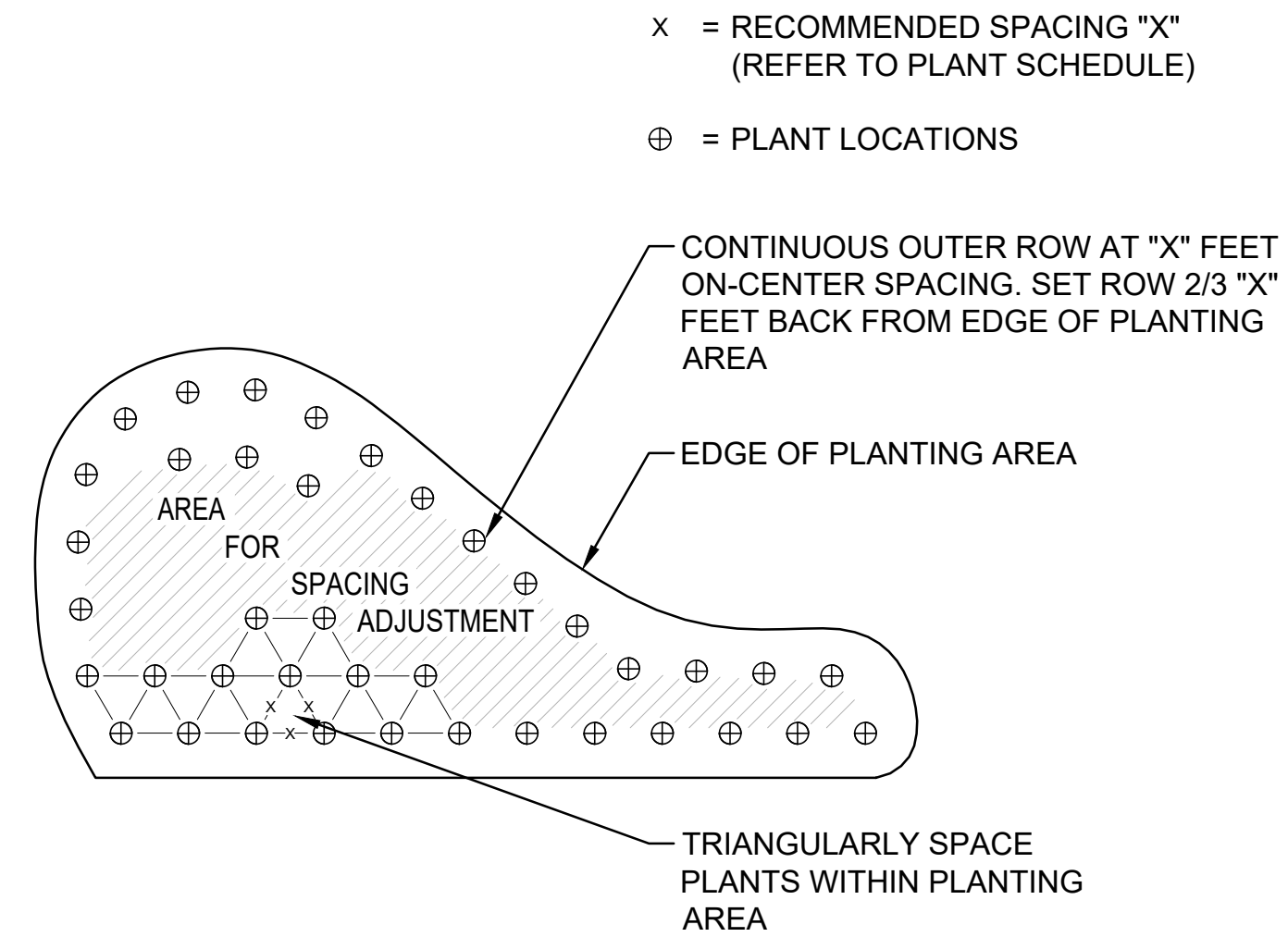
3 CONIFEROUS TREE PLANTING

N.T.S.



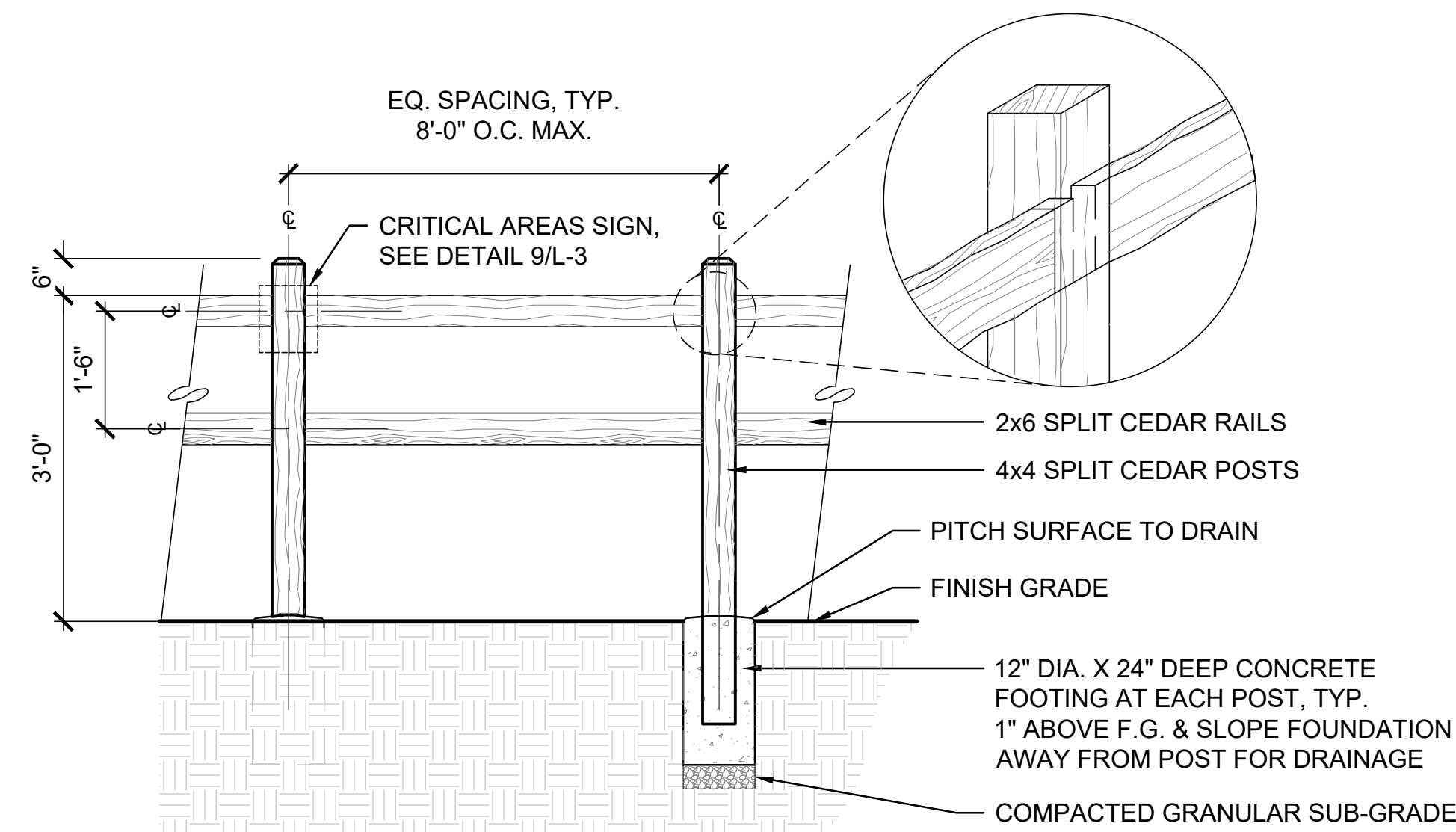
4 SHRUB PLANTING

N.T.S.



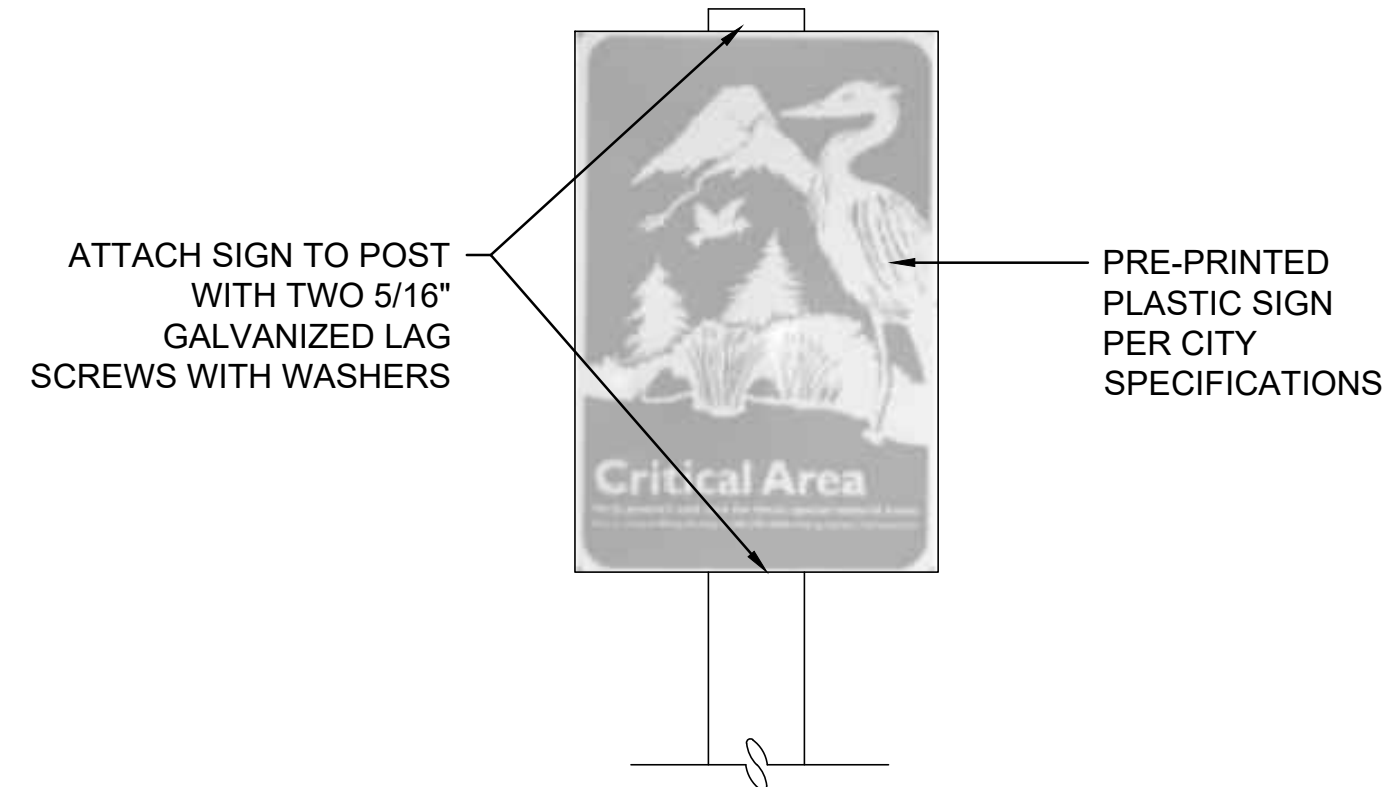
5 PLANT SPACING AND PATTERN

N.T.S.



6 SPLIT-RAIL FENCE

1/2\"/>



7 CRITICAL AREAS SIGN DETAIL

N.T.S.

ZHANG RESIDENCE
 PARCEL: 1438700145
 MERCER ISLAND WA 98040



LOTUS LANDSCAPE DESIGN
 425 753 3424
 JOSEPHINE@LOTUSLANDSCAPEDESIGN.COM



STATE OF WASHINGTON
 REGISTERED
 LANDSCAPE ARCHITECT
 Josephine Chang Chen-Lian
 CERTIFICATE NO. 905

ISSUE DATE
 APRIL 28, 2025

NO. DATE DESCRIPTION OF REVISIONS

**LANDSCAPE
 DETAILS**

SHEET NUMBER

L-3